

CITY OF CAMPBELL, CA  
Guidelines for Historic Downtown



**Project**  
Design Guidelines for Historic  
Buildings + Downtown

**Scale**  
Downtown

**Date**  
Spring 2002 - December 2002

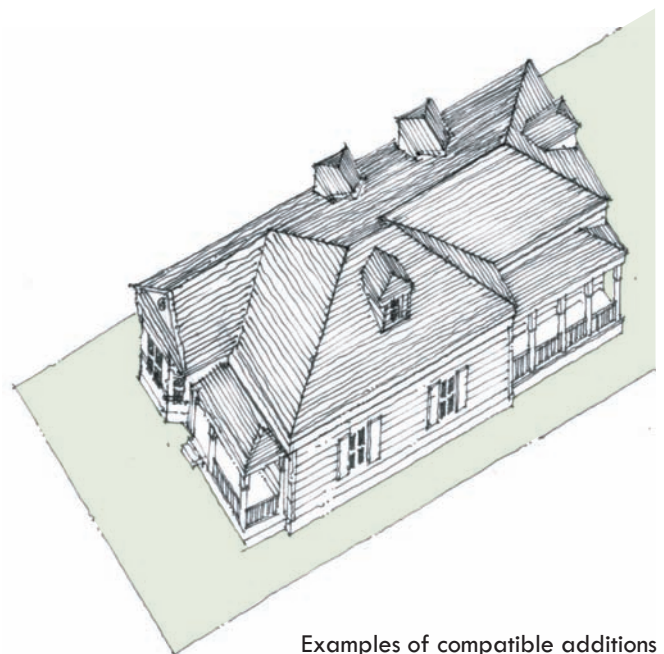
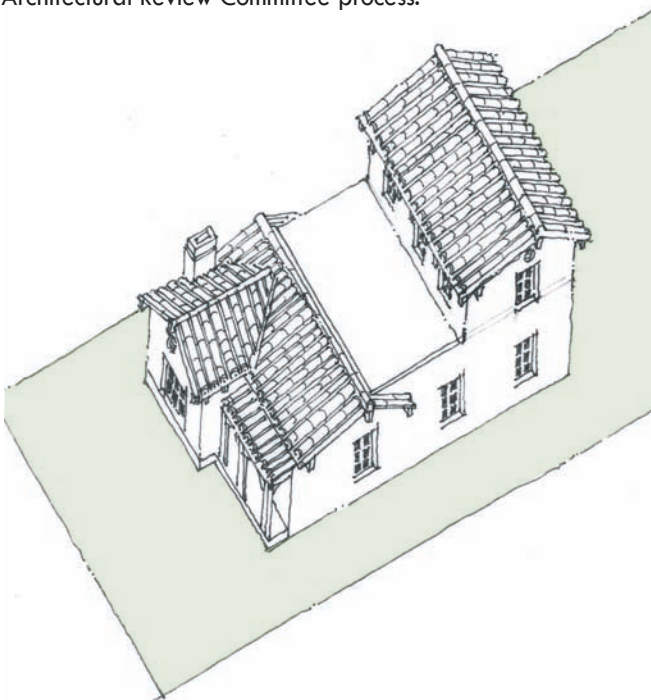
**Client**  
Sharon Fierro  
Community Development Director

**Role**  
Principal-in-Charge  
FTB Urban Design

The City of Campbell hired Alison Kendall, Principal at Freedman Tung and Bottomley, to develop Design Guidelines for Historic Buildings and the Downtown Neighborhood. The guidelines address new construction, additions to historic buildings. Illustrations represent the range of architectural styles found in Campbell, originally an agricultural area, which retains its small-town charm within Silicon Valley.

Guidelines for new construction identify existing patterns which should be continued in newer construction, while guidelines for additions interpret the Secretary of Interior's standards for Rehabilitation of Historic Buildings for typical building types and structures within the City.

The Guidelines provided essential updates to City materials for project applicants and architects, integrating new legislation and interpretations on Historic Preservation and the California Environmental Quality Act (CEQA) as well as the City's local Historic Preservation Board and Site and Architectural Review Committee process.



Examples of compatible additions to Spanish Colonial and Queen Anne homes which preserve original character.